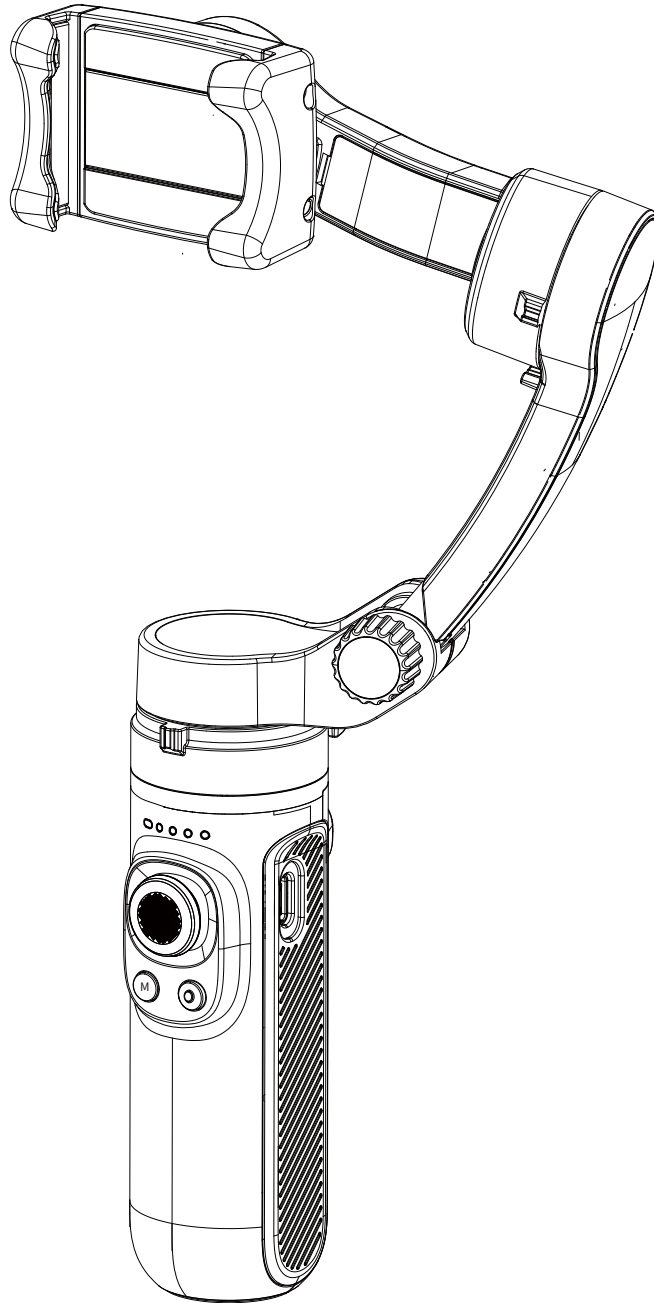


# DOLPHIN Quick Guide

V1.2

2021.09



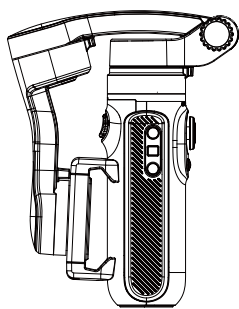
# Contents

<b>Product Overview</b>	01
Packing List	01
<b>Get to know HQ3</b>	02
<b>Product Use</b>	03
Battery Charging	03
Before Use	03
Mounting of Mobile Phone	04
Power Button	05
Three buttons on the side	05
<b>Function Operations</b>	06
Function Description of Mode	06
Mode Switch Button	07
Four-directional Joystick operation	07
Trigger Button Operation	08
Manual Lock	09
Indicator Light Status	09
<b>Disclaimer and Warning</b>	10
<b>Product Specifications</b>	11

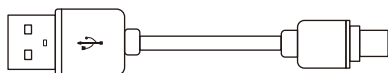
### Product Overview

DOLPHIN is a hand-held stabilizer specially designed for mobile phone, which enables mobile phones to take stable and smooth pictures. Foldable storage, supporting horizontal and vertical screen of Mobile phone, with perfect functional design and simple operation.

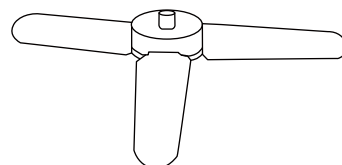
### Packing List



Stabilizer x1

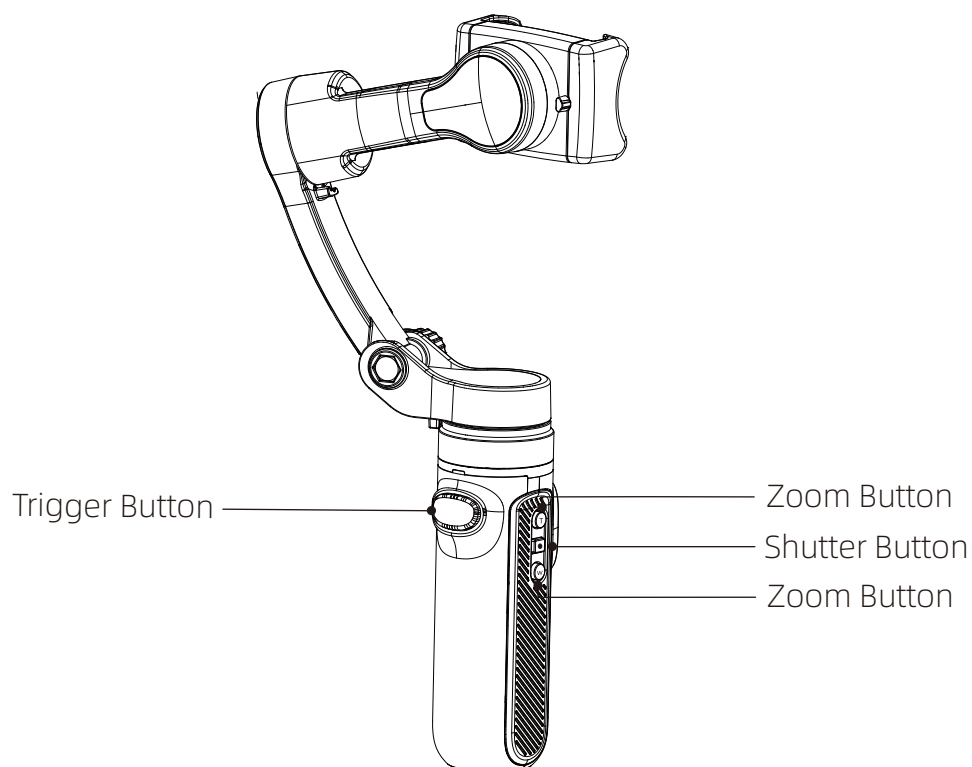
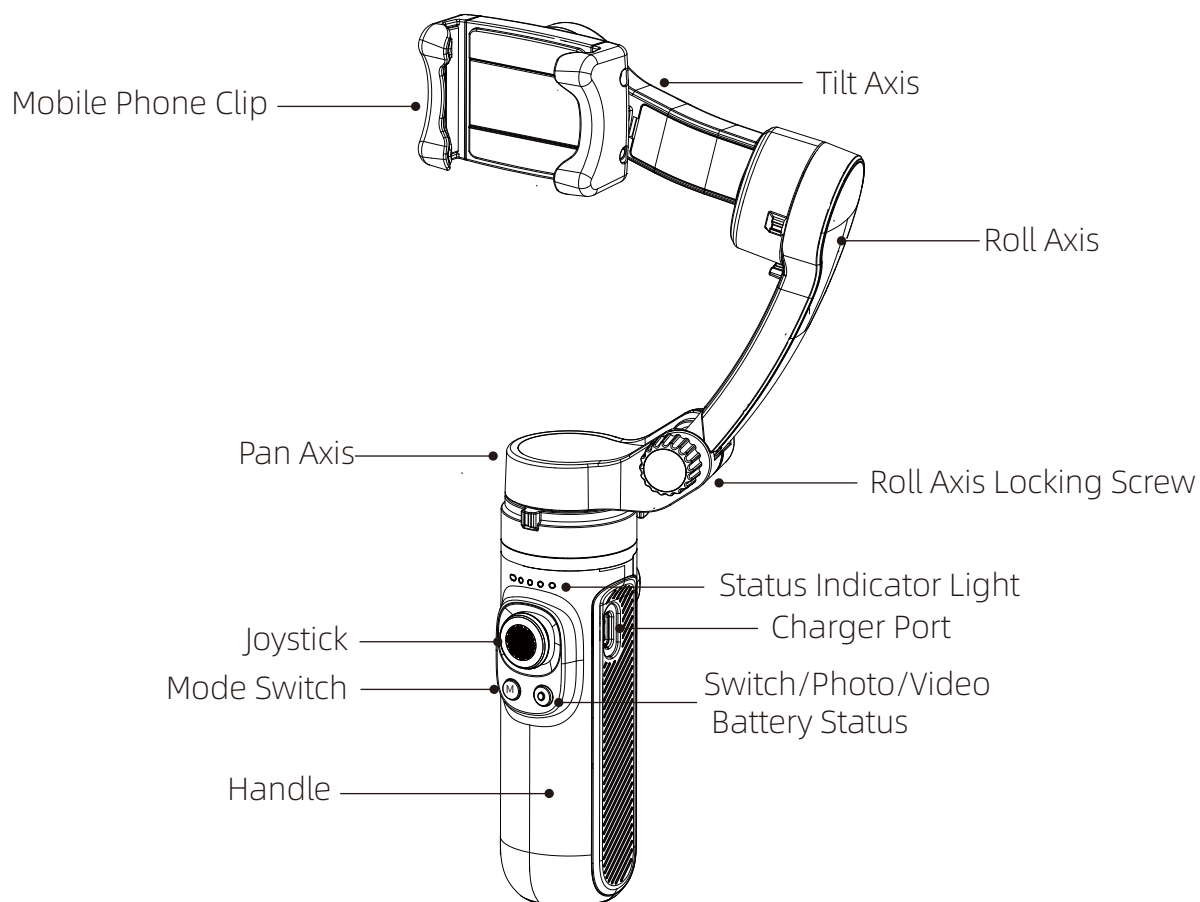


Charging Cable x1



Tripod x1

## Know the product

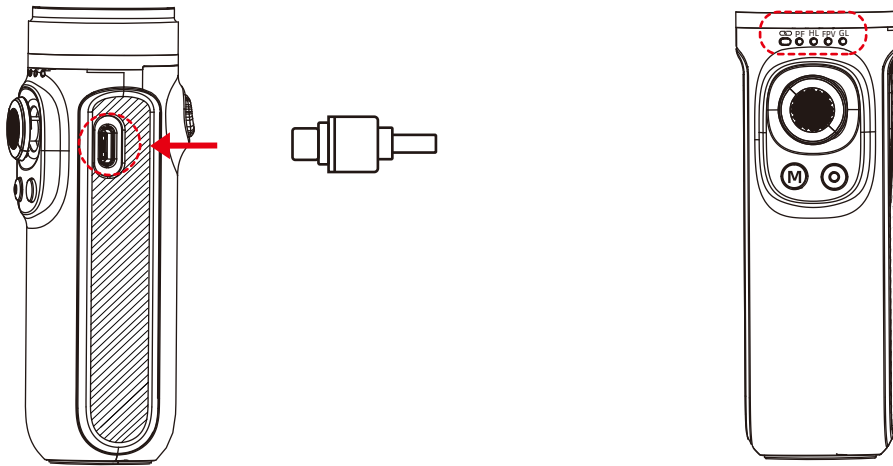


- Mobile Phone is not included in the packing list.

## Product Use

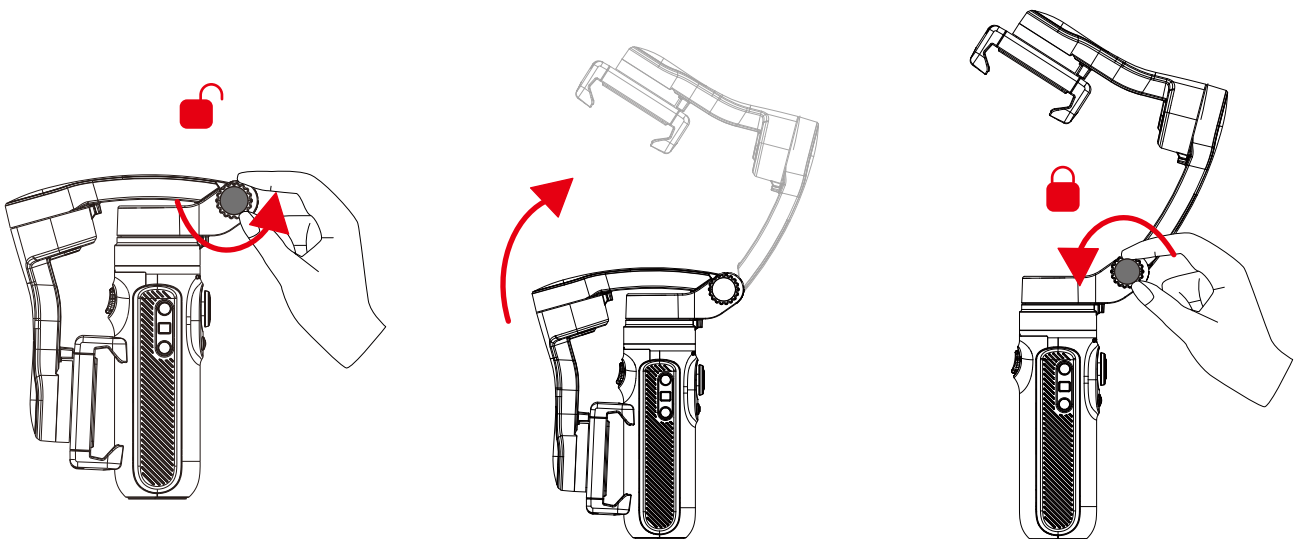
### Battery Charging

Charging with a Type-C cable. The blue light flashes during charging, while the four lights are constant on when the battery is fully charged.



- ⚠ NOTE:
- Make sure to fully charge the stabilizer when using for the first time.
  - Charge the stabilizer immediately if the power is too low and the red-light flashes slowly.
  - Turn off the power if not in use.

### Before Use



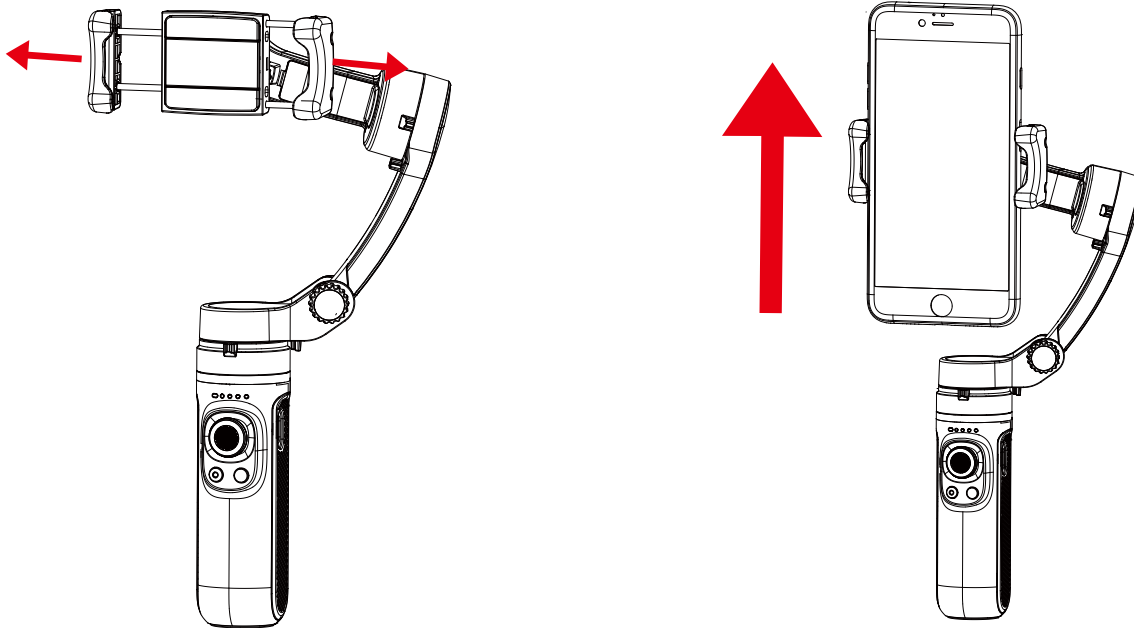
①Loosen the screw on the stabilizer.

②Spread it up.

③Tighten the screw.

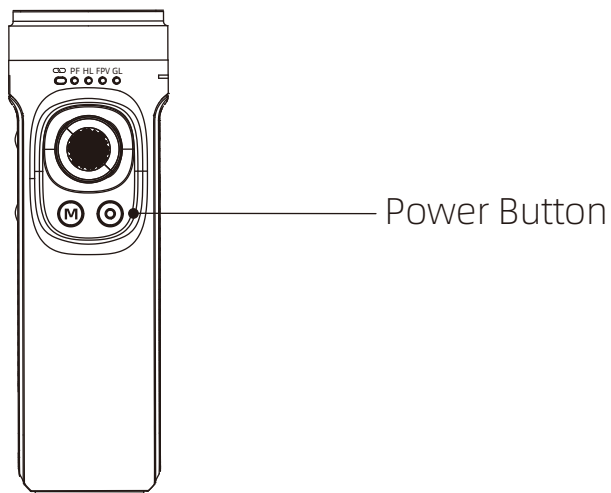
### Mounting of Mobile Phone

\*It is recommended to remove the protective cover of the Mobile Phone before mounting. Pull out the mobile phone clip and place the mobile phone in the center. Mount the mobile phone according to the direction indicated by the arrow.



## Power Button

- ① Under the condition of power on or off, press the power button for two seconds to turn on or turn off.
- ② Under the condition of power on or off, click the power button to display the power of the stabilizer.
- ③ In the power-on state, single click to photo/record.
- ④ In the power-on state, double-click the power button into standby mode, then click any button to restore the working state of the stabilizer.



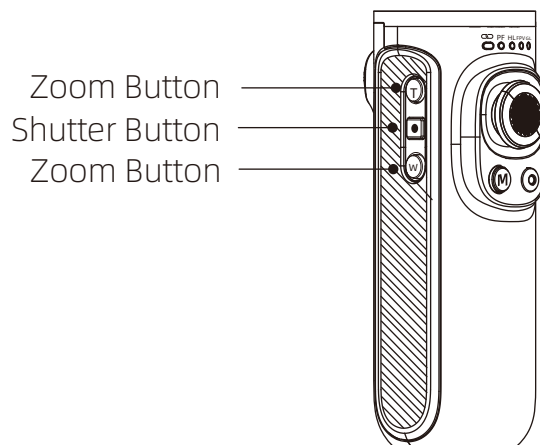
 Tip: Turn on the phone only after it is firmly installed.

## Three buttons on the side

T Button: Zoom Button

Shutter Button: photo/Record/switch front and rear cameras

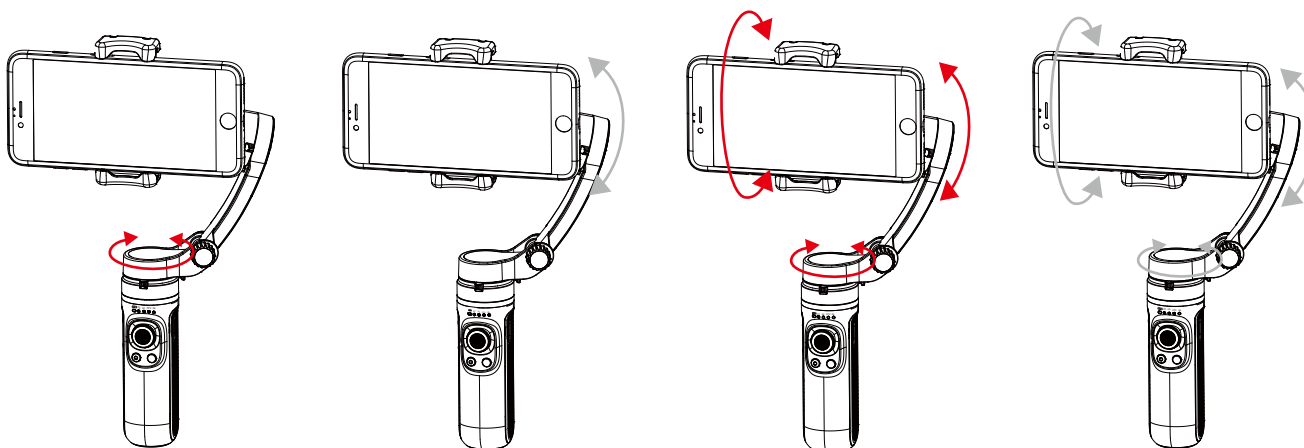
W Button: Zoom Button



## Function Operations

### Function Description of Mode

#### ① Mode



Pan following Mode  
Single click mode button

Horizontal Lock (Default Mode)  
Click again mode button

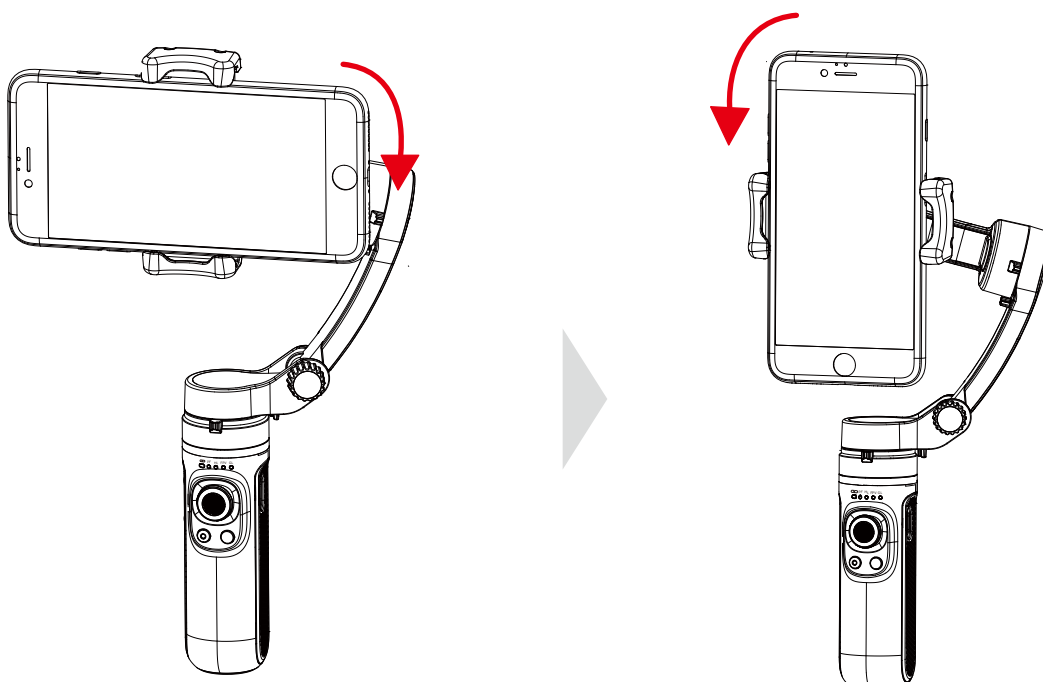
FPV First PersonView  
Click again mode button

Full lock mode  
Press and hold the trigger button

⚠ The red arrow indicates that the motor follows the movement of the handle to change the angle, and the gray arrow indicates that the motor locks the angle and does not follow the movement of the handle.

#### ② Horizontal/Vertical Shooting

Double click the mode button to switch between horizontal and vertical shooting.





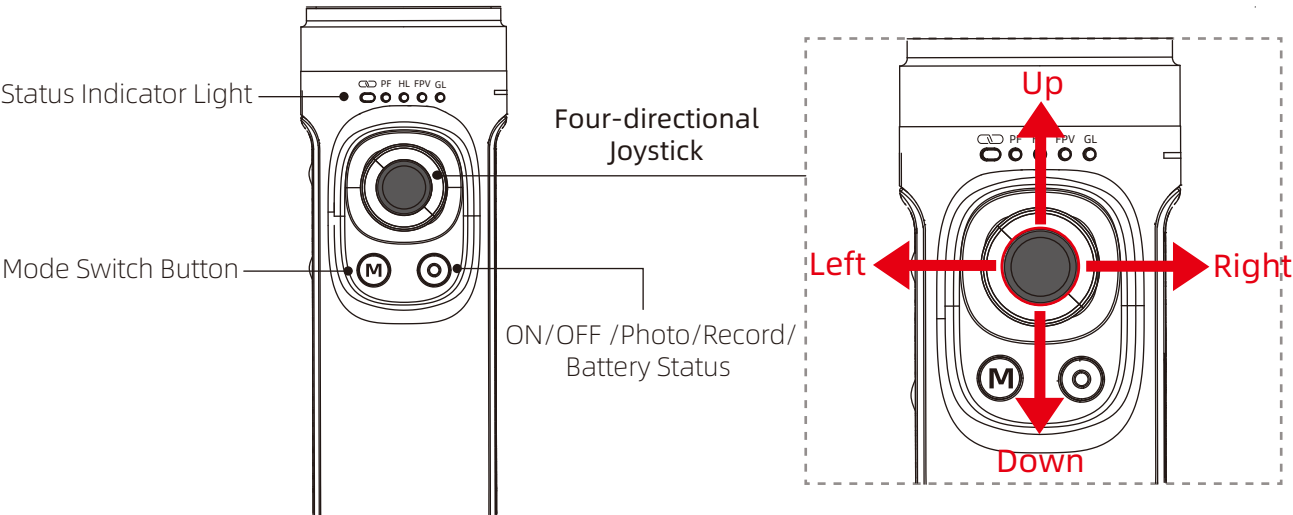
Mode	Description
Pan Follow （PF）	Tilt axis and roll axis keep the same direction, and the lens rotates with the direction of the handle.
Horizontal Lock （HL） （Default Mode）	Roll axis remains horizontal, and the lens rotates in the direction of the handle.
FPV First PersonView （FPV）	The lens follows the projection direction of the handle to simulate the first-person visual effect.
Full lock mode （GL）	Press and hold the trigger button to enter into full lock under PF/HL mode.
Vertical Shooting	Assist the mobile phone to shoot horizontally or vertically.
Trigger Lock	Pull the mobile phone to the specified angle of pan and tilt axes for half a second to lock the current angle.

Mode Switch Button

1、Description

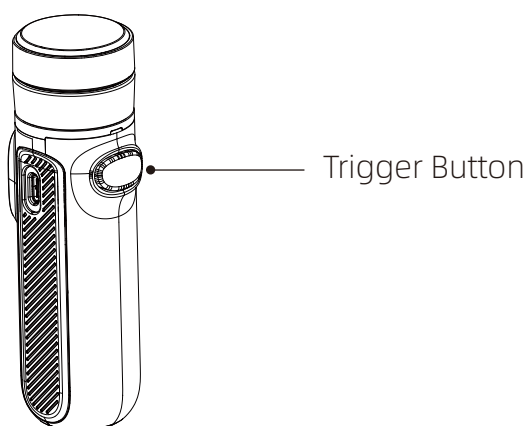
- ① Single click to switch PF - HL - FPV mode in cycle.
- ② Double click to enter vertical shooting.
- ③ Long press the trigger button to enter GL mode (Lock mode), release to back to the previous mode(GL mode only takes effect in PF or HL mode. )

Four-directional Joystick operation



Joystick Operation	Description
Push up/ Push down	Control the tilt axis rotating up and down
Left push / Right push	Control the pan axis rotating left and right

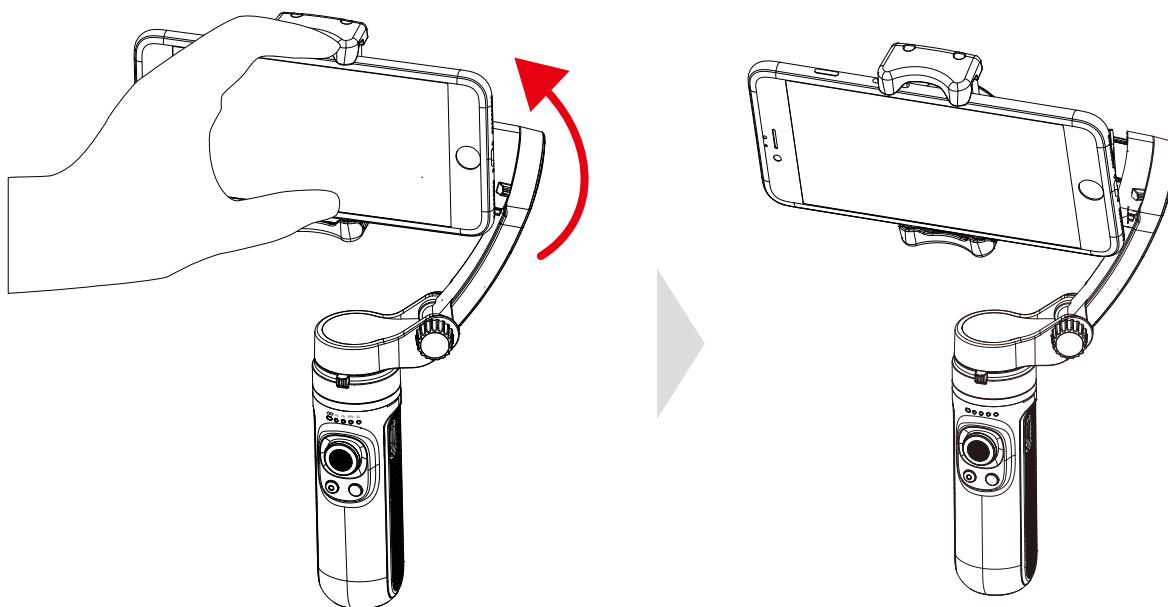
### Trigger Button Operation



Trigger Button	Description
Hold on	Enter GL mode (Press and release to return to previous mode)
Double click	Reset (Tilt axis and pan axis)
Triple hit	The gimbal follows faster/ slower

## Manual Lock

Hold the mobile phone clip by hand, pull it to the specified angle in the tilt direction, and stay for half a second to lock the current angle.



## Indicator Light Status

Indicator Light Status	Description
Blue LED Light	Under turn off and standby mode display the current power from the left: 0-25%, 25-50%, 50%-75%, 75-100%
	After power on, it represents the mode status, from left to right are: Pan Follow(PF), Roll Lock(HL), First-Person Mode(FPV), Full Lock Mode(GL)
Green LED Light	Display the Bluetooth connection status. It is always on when Bluetooth is connected, and it is always off when there is no connection. After pairing is cleared, the light flashes slowly during Bluetooth scan. If it is connected, the light is always on, while it will be off if there is no connection.
Red LED Light	Display the current upgrade status. The red-light flashes quickly when upgrading, after upgrading it will be on for three seconds and then turn off. When the power is less than 10%, the red light will flash slowly. If the upgrade fails or cannot be upgraded the red light will always on.

# Disclaimer and Warning



### Warning

The contents mentioned in this article are related to your safety, legal rights and responsibilities. Please read them carefully and set up and use this product correctly according to the instructions. If you do not follow the instructions and warnings in this article, it may cause harm to you and the people around you and damage the product or the products around you. Any illegal use by any user is prohibited. The user will be responsible for all actions of purchasing and using the product. For this product, the company does not bear all the risks and responsibilities (including direct, indirect, or third-party losses) of the end customers during the debugging and use of this product. Our company will not provide any service for any products obtained from abnormal channels or for unknown purposes.

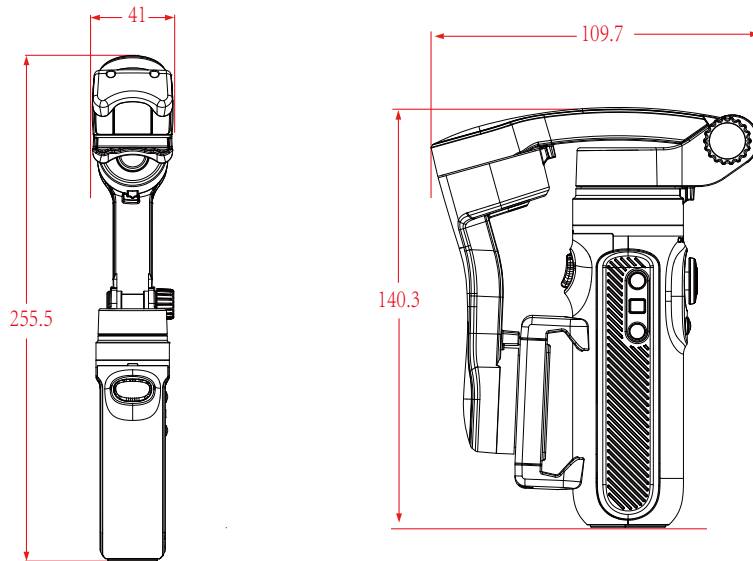
## Disclaimer

- Ensure that the motor rotation is not blocked by external force during and after the stabilizer is on.
- Do not contact the stabilizer with water or other liquids.
- Do not disassemble the whole stabilizer. If it is disassembled carelessly and causes abnormal operation, please send it back for re debugging. All the expenses arising therefrom shall be borne by the customer.
- Long time continuous operation may cause the surface temperature of the motor to rise, please operate with caution.
- It is strictly forbidden to fall or collide. Falling or colliding the stabilizer may damage it and cause abnormal operation. In case of abnormal work caused by falling or collision, please contact the after-sales department in time.

## Storage and maintenance

- Please keep this product out of the reach of children and pets.
- It is forbidden to place the product near the heat source (stove or heater, etc.) or in the car in hot weather.
- Please store in a dry environment.
- Do not overcharge or discharge the battery, otherwise it will cause damage to the cell.
- Do not use this product in high or low temperature environment.

## Product Specifications



Product Dimensions:	255.5mm×41mm ( unfolded ) 140.3mm×109.7mm ( folded )
Belt Clip Stretchable Distance:	105mm ( Max. Distance ) 55mm ( Min. Distance )
Item Name:	Dolphin 3-Axis Stabilizer for Smartphone
Product Material:	Environmental Protection ABS + Glass Fiber
Charging Method:	5V2A
Charging Voltage:	5V2A
Bluetooth Version:	Bluetooth 5.0
Battery Capacity:	2500mAh
Product Load:	280g
Endurance Time:	Laboratory stationary placement test results are 9 hours.
Product Weight:	295g ( battery included )
Name of Bluetooth Device:	INKEE062
Remote Control Distance:	Within 10M
Tilt Axis Controllable Angle Range:	-28° to 28°
Roll Axis Controllable Angle Range:	-140° to 150°
Pan Axis Controllable Angle Range:	-215° to 75°
Three Axis Mechanical Rotatable Angle:	295°