

GOLD CROW 150

USER MANUAL

Chinese

Important safety instructions

First of all, as a basic principle: this product is a professional lighting equipment and should be used by professional lighting technicians or under the guidance of professionals. Basic safety precautions must always be followed when using it. The specific safety precautions are as follows:

1. Read and understand the product manual before use.
2. Professional lamps are prohibited for children. When children are close, parents or guardians must supervise closely to prevent children from colliding with lamps or personal injury caused by private use of lamps.
3. This lamp is not an ordinary lighting lamp and cannot be used for ordinary lighting. Anyone with eye injuries or eye sensitivity should avoid using this lamp.
4. When the lamp is lit, it must be used with caution and high-temperature parts such as LED lamp heads are prohibited to avoid burns.
5. When the lamp is lit, it is forbidden to look directly at the lamp beads under any circumstances. Strong light should be used under the guidance of professional lighting technicians. Avoid being in a strong light environment for a long time under any circumstances. If it causes eye discomfort, please turn off the lamp in time, suspend use, and seek medical attention in time.
6. If the lamp is damaged or deformed due to heat, stop using it and contact the manufacturer, service agent or qualified maintenance personnel to replace the lamp in time to avoid accidents.
7. This product is only suitable for use in a working environment of $-10^{\circ}\text{C}\sim 40^{\circ}\text{C}$.
8. Do not use damaged equipment or equipment accessories. Wait for professional maintenance personnel to check and repair and confirm that the equipment is normal before use.
9. During use, if the shell of this product is broken due to falling, squeezing or strong impact, do not continue to use it to avoid electric shock injury due to contact with internal electronic components.
10. Do not place the device near flammable and volatile solvents such as alcohol and gasoline.
11. Do not use product accessories that are not recommended by our factory to avoid fire, electric shock or personal injury.
12. This product has passed ROHS, CE and FCC certifications. Please refer to relevant national standards for use and operation.
13. The safety instructions are formulated based on strict testing by our factory. The design and specifications of the equipment are subject to change without further notice. Customers can go to INKEE official website to view the latest electronic version of the instructions and learn about the latest product information.
14. One-year warranty period, consumable storage bags, power cords, standard covers and other accessories are not covered by this warranty.
15. If it is found that the equipment is repaired without authorization, the one-year warranty period will be cancelled, and the repair will be charged.
16. Machine failures caused by improper operation are not covered by the warranty.

PREFACE

Gold Crow 150 is an integrated video light designed by INKEE. It is compact and light, with 95+ color rendering index, color temperature adjustment and 140w fast charging and discharging functions. The flashlight-like appearance is more convenient to carry, and the deformable Bowens bayonet can be compatible with existing Bowens bayonet lighting accessories, achieving a variety of lighting effects to meet the needs of different users.

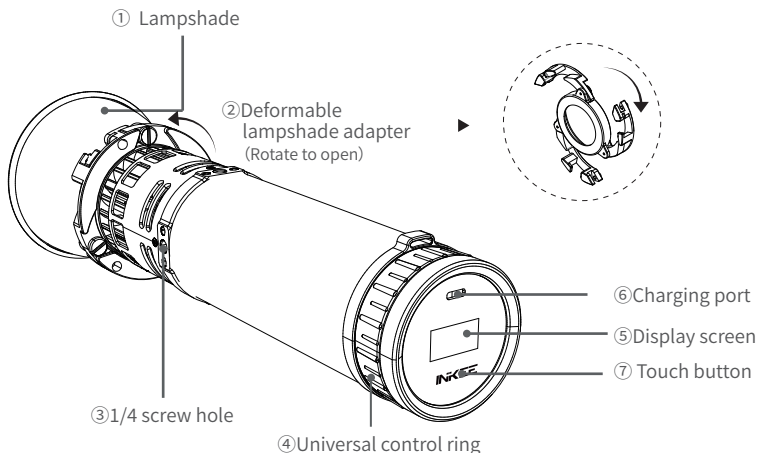
WARNING

- ⚠ To avoid accidentally touching the sliding switch when the product is not in use, it is recommended to enter the transport mode when the product is not in use.
- ⚠ Please complete a full charge and discharge cycle for the first use, that is, completely discharge until the battery is exhausted and then recharge it!
- ⚠ The Type-C port is not waterproof, please do not contact water.
When this product is working, do not look directly at the COB lamp beads; do not cover the lamp
- ⚠ Head with objects; do not touch the COB lamp beads under any circumstances.
- ⚠ There must be no obstructions on the ventilation holes to avoid affecting heat dissipation and causing damage to the equipment.



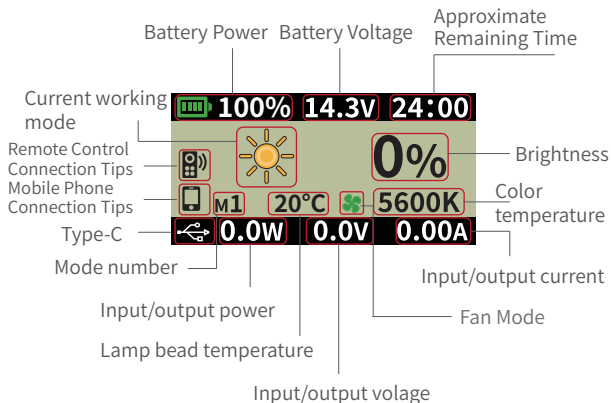
Not to be looked directly at

Product Structure



- ① Lampshade: Gather light and improve central illumination.
- ② Lampshade adapter: can be equipped with official standard lampshades and various Bowens accessories.
- ③ 1/4 screw hole: Load and remove other accessories.
- ④ Universal control ring: Adjust the brightness of the lamp and option parameters.
- ⑤ Display Screen: display data.
- ⑥ Charging port: power supply and discharge.
- ⑦ Touch button: enter color temperature adjustment and special effect mode.

Interface Description



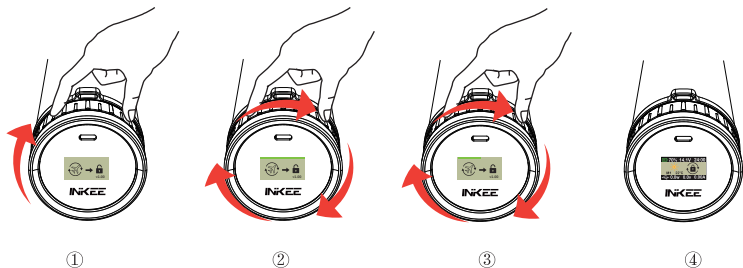
Product use

Transportation mode

1. Unlock the transportation mode

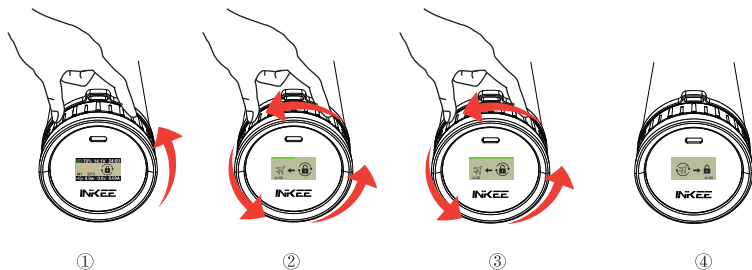
When using this product for the first time, please unlock the transportation mode first,

- ① rotate the control ring to activate the screen and the transportation mode interface displays,
- ② then need to continuously rotate the control ring clockwise several times,
- ③ until the progress bar at the bottom of the screen is full,
- ④ successfully unlock the transportation mode



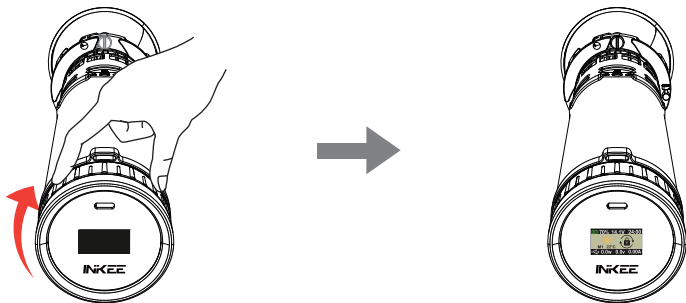
2、Enter the transportation mode

①When the device is locked ②Rotate the control ring counterclockwise continuously
③until the progress bar at the bottom of the screen is full ④and the following icon appears,
indicating that the device has entered the transportation mode.



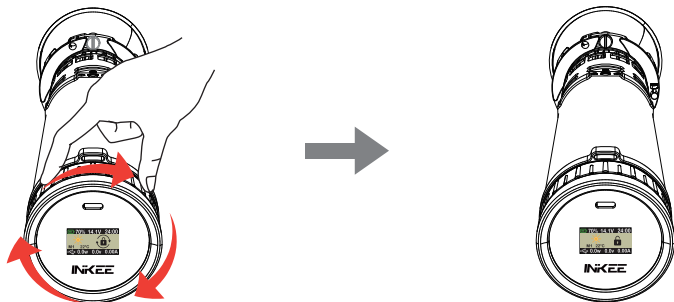
Activate the screen

Rotate the control ring in any direction (left or right) to wake the screen.



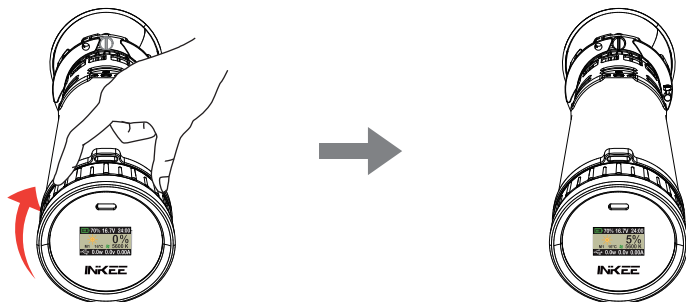
Unlock

After waking up the screen, quickly rotate it clockwise to unlock and enter the main interface.



Adjust the brightness

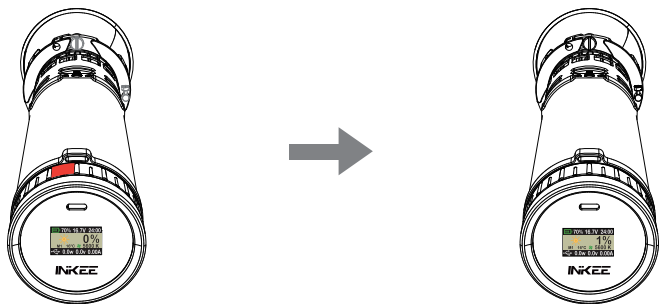
1. Rotate clockwise in the main interface to increase the brightness.



2. Rotate counterclockwise in the main interface to decrease the brightness.

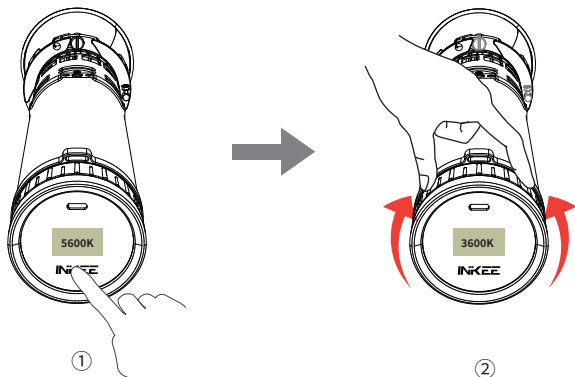


3. Each rotation in the main interface is to adjust the brightness by 1%, and a quick rotation is to adjust the brightness by 10%.



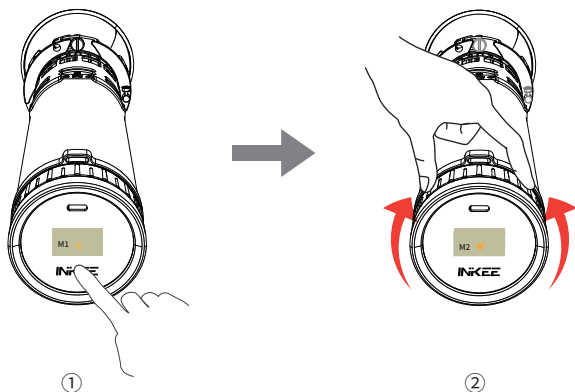
Adjust the color temperature

① Tap the screen button once (where the INKEE logo is printed) in the main interface to enter the color temperature adjustment mode. ② rotate clockwise the control ring to increase the color temperature, while rotate counterclockwise to decrease the color temperature.



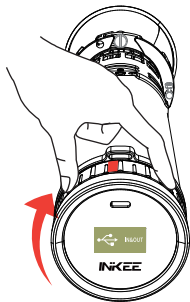
Special Effect Mode

① Tap the screen button twice on the main interface (where the INKEE logo is printed) to enter the special effect mode, ② Turn the control ring left or right to select the special effect mode.

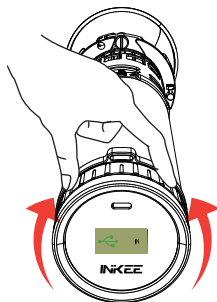


Charging and discharging options

On the lock screen, rotate the control ring half a notch clockwise and hold for two seconds to enter the device's charge and discharge options. Rotate the control ring left or right to select the devices' Type-C charge and discharge settings.



① Rotate the control ring half a notch clockwise and hold it for two seconds to enter the charge and discharge option setting.

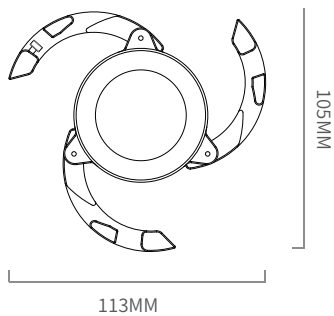
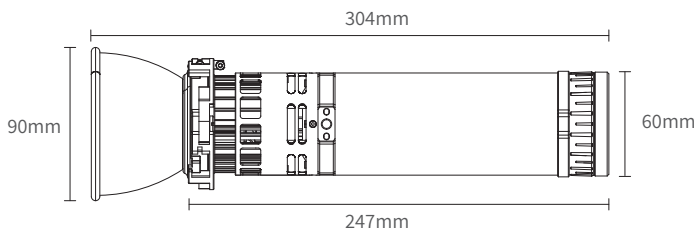


② Rotate the control ring left or right to select Type-C port charging or discharging(IN & OUT) or charging only(IN).

Product Parameters

Model	GC150	CRI/TLCI	Average 96 Average 96
Lamp head rated power	150W	Dimming range	0%-100%
Input voltage and current	140WMAX(28V5A)	Control method	Light body control
Battery capacity	9600mAh	Scene effects	8 Types
Charging duration	Charge 140w to 80% in 60 minutes Full in 80 minutes	Product weight	1.1kg
--	100W/80minutes 150W/45minutes	Product size	see the picture
Color temperature	2700k-6500k		

NOTE: The battery voltage is about 16.8V, which means it is fully charged. When the battery voltage drops to 12V, the power is limited to 100%. When the battery voltage drops to 10.8V, the power is limited to 1%, until the battery protection turns off the light.



Color Temperature	Distance	Power	Bare light	With lampshade	Fresnel 15	Fresnel 45
2700k	1m	100W	3790lux	11100lux	26600lux	10100lux
3200k			3960lux	11700lux	28300lux	10700lux
4000k			4190lux	12400lux	30200lux	11400lux
4800k			4360lux	12900lux	31600lux	11900lux
5600k			4490lux	13400lux	32600lux	12300lux
6000k			4550lux	13600lux	33100lux	12500lux
6500k			4610lux	13800lux	33600lux	12700lux
2700k		150W	5130lux	15200lux	37100lux	13800lux
3200k			5460lux	16200lux	39600lux	14800lux
4000k			5810lux	17300lux	42300lux	15800lux
4800k			6060lux	18100lux	44200lux	16500lux
5600k			6230lux	18700lux	45500lux	17000lux
6000k			6300lux	18900lux	46100lux	17200lux
6500k			6450lux	19300lux	46700lux	17500lux

Shenzhen Yingzhiqi Technology Co., Ltd

Address: Room 705, No.8, Zone 41, No.31 Jia'an Road, Haile Community,
Xin'an Street, Bao'an District, Shenzhen, Guangdong China.

Tel: +86 40096 80096 Website: www.in-kee.com

Latest version of the User Manual is available at Official Website:
<https://www.in-kee.com/en/user-manual-2/>

This manual is subject to update without prior notice. If you have
any questions or suggestions about the manual, please contact
us at the following email address:
info@in-kee.com



APP Download



Firmware Download



Official website QR code



WeChat Subscription